



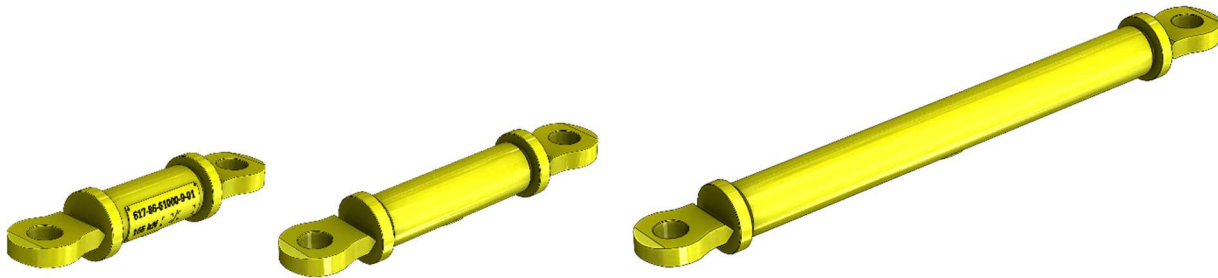
# CONNECTING ROD TYPE STx

KL-STx-EN

VERSION VALID FROM

0 24. 05. 2022

Page 1 / 1



## Description:

Connecting rods are used to connect trolleys, lifting devices and other selected equipment operated on suspended monorails. Connecting rods can be used in an IM2 environment.

Connecting rods are produced in lengths of 140 mm - 2000 mm. Their design allows the connection of hinged or suspension joints of the equipment. The ends of the rods are provided with eyelets for connecting the stirrups to the devices.

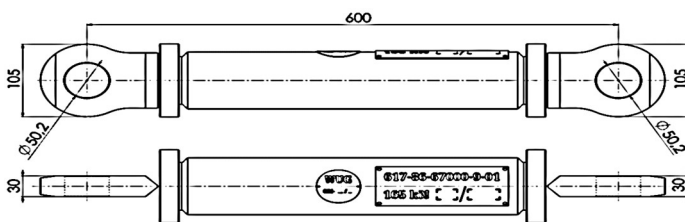
The connecting rods are manufactured according to the production documentation in order to ensure the design, the prescribed material. The connecting rods are provided with safety varnish.

## Basic technical parameters:

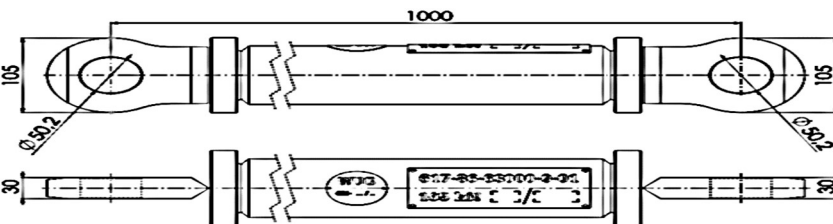
Drawwing No.	Name	kN	Pitch length (mm)	hole (mm)
617-86-67000-9-01	Connecting rod 600	180	600	50 / 50
617-86-63000-9-01	Connecting rod 1000	180	1000	50 / 50

## Dimensional drawing:

Connecting rod 600:



Connecting rod 1000:



Equipment catalog is for general description only and we will produce according to customer's detailed requirements.



FERRIT, s.r.o., Harcovská 1476, Frýdlant nad Ostravicí, 739 11, Czech Republic  
Tel: +420 558 411 605, Fax: +420 558 411 620, E-mail: ferrit@ferrit.cz, <http://www.ferrit.cz>